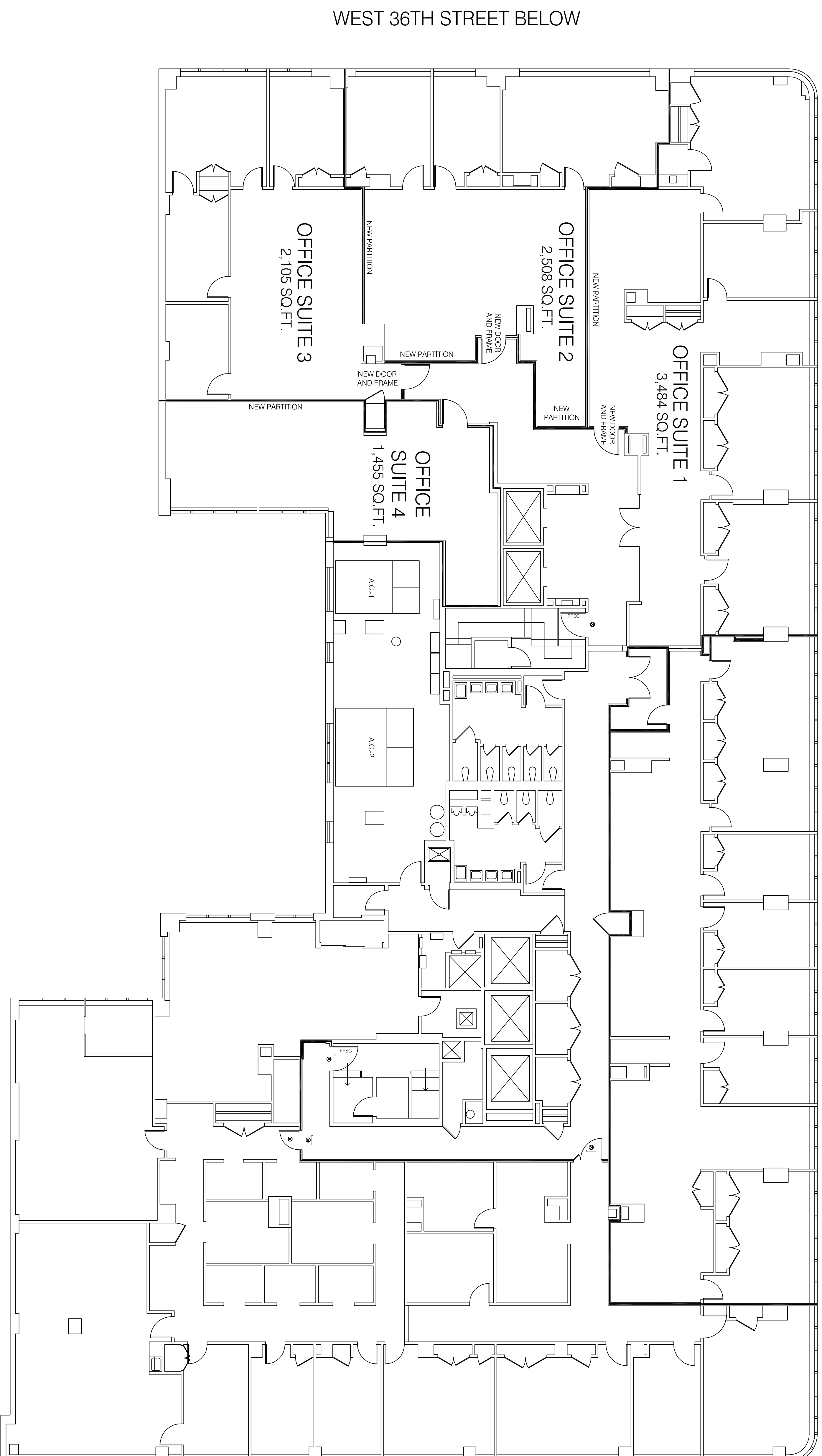


AVENUE OF AMERICA BELOW



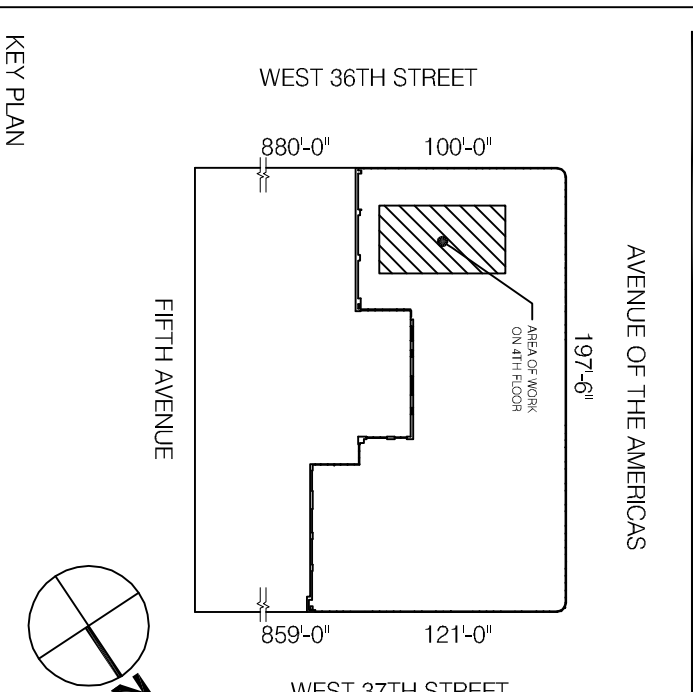
WEST 37TH STREET BELOW

WEST 36TH STREET BELOW

980
AVENUE OF THE AMERICAS

No.	DATE	ITEM

ALL DESIGNS, ARRANGEMENTS AND PLANS INDICATED OR REFERENCED BY THESE DRAWINGS ARE OWNED BY AND RESERVED FOR THE ARCHITECT. NO PART OF THESE DRAWINGS OR INFORMATION CONTAINED HEREIN IS TO BE REPRODUCED OR TRANSMITTED IN ANY FORM OR BY ANY MEANS, ELECTRONIC OR MECHANICAL, INCLUDING PHOTOCOPYING, RECORDING, OR BY ANY INFORMATION STORAGE AND RETRIEVAL SYSTEM, WITHOUT THE WRITTEN CONSENT OF THE ARCHITECTS.
© 2010 SHALATI ARCHITECTS



SHALATI ARCHITECTS P.C.
152 WEST 25TH STREET, NEW YORK, N.Y. 10001
TELEPHONE 212 691-7522 FAX 212 691-0792

PROJECT
980 AVENUE OF THE AMERICAS
NEW YORK, NY 10018

FOURTH FLOOR
PRESENTATION PLAN

SEAL & SIGNATURE
DATE: 06-21-10
PROJECT NO.: X-240
DRAWN BY: LC
CHK BY: ES
DWG NO.:

SK-103.01
CAD FILE NO.: 980-4-SCHM
01 OF 01

1 FOURTH FLOOR PRESENTATION PLAN B
SCALE: 1/8" = 1'-0"

